



USB-C 10Gbps Gen 2 External SATA SSD Enclosure

Model 201079



User Manual

Download the user manual at:
www.cablematters.com/dl/201079

support@cablematters.com

Table of Contents

1. INTRODUCTION.....	1
1.1 Introduction	
1.2 Copyright and Trademarks	
1.3 FCC Compliance Statement	
2. PRODUCT OVERVIEW	
2.1 Package Contents	
2.2 Product Description	2
2.3 Product Features	
2.4 Installation Checklist	
3. SATA DRIVE INSTALLATION.....	3
3.1 SATA Drive Installation	
3.2 Connecting the Enclosure to the Computer	4
4. DRIVE FORMATTING FOR WINDOWS & MAC	5
4.1 Initializing & Formatting the SSD Drive in Windows 10	
4.2 Initializing & Formatting the SSD Drive in macOS	7
5. TROUBLESHOOTING STEPS	8
6. TECHNICAL SPECIFICATIONS.....	9
7. WARRANTY AND SUPPORT	
7.1 Customer Support and Contact Information	
7.2 Warranty Information	
7.3 Limitations of Liability	

1. INTRODUCTION

1.1 Introduction

Thank you for your purchase from Cable Matters® Inc., the 'Reliable Connectivity' company. This User Manual provides an overview of the features and installation of your new:

USB 3.1 Type-C™ Gen 2 External SATA SSD Enclosure

Please read these instructions carefully before connecting, operating or configuring this product. Please keep this manual for future reference.

Contact support@cablematters.com for questions or product support.

1.2 Copyright and Trademarks

Specifications are subject to change without notice. Cable Matters is a registered trademark or trademark of Cable Matters Inc. All rights reserved. All other trademarks are the property of their respective owners.

Thunderbolt and the Thunderbolt Logo are trademarks of Intel Corporation in the U.S. and/or other countries.

USB Type-C™ and USB-C™ are trademarks of USB Implementers Forum

1.3 FCC Compliance Statement

This device complies with Part 15 of the FCC Rules. Operation is subject to the following two conditions: 1) This device must not cause harmful interference, and 2) this device must accept any interference received, including interference that may cause undesired operation.

2. PRODUCT OVERVIEW

2.1 Package Contents

Please check that the following items are contained in the package:

USB-C 10Gbps External SATA SSD Enclosure

USB-C 10Gbps Type-C 10Gbps cable

USB-C Type-C to Type-A 10Gbps cable

Quick Start Guide (download the user manual from Cable Matters website)

2.2 Product Description

The Cable Matters® USB 3.1 Type-C™ External SATA SSD Enclosure provides a convenient way to connect a 2.5" SATA SSD or HDD drive to a computer. Add back-up storage to a computer with USB-A, USB-C or Thunderbolt 3. This compact Enclosure with a USB 3.1 10Gbps rating increases the data transfer rate from a SATA SSD up to 25%.

2.3 Product Features

- Add portable external storage to a computer with USB-A, USB-C or Thunderbolt 3
- Migrate files from a computer with USB-A to a new computer with USB-C
- OS independent with no external drivers or software required
- Install a new or existing 2.5 SATA SSD or HDD up to 9.5mm (including 7mm)
- Sturdy aluminum enclosure housing with ventilation dissipates heat and protects the SSD drive
- UASP support with a UASP equipped computer
- TRIM support with a compatible hard drive and computer OS
- S.M.A.R.T technology support with a compatible hard drive and computer OS

2.4 Installation Checklist

- ✓ Computer with a USB-C or USB-A port supporting data transfer or a Thunderbolt 3 port
- ✓ USB-C/USB-A Gen 2 10Gbps port or a Thunderbolt 3 port is required for the max transfer speed
- ✓ 2.5" SATA SSD or HDD up to 9.5mm in height
- ✓ USB-C to USB-C or USB-C to USB-A cable (included)
- ✓ Anti-static wrist strap or other grounding method (not included)

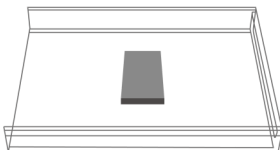
3. SATA DRIVE INSTALLATION

3.1 SATA SSD or HDD Drive Installation

! **Important Note!** Handle the drive carefully to avoid damage. Always use an anti-static wrist strap or other grounding method. Place the enclosure tray on a clean, solid surface.

- 1) Press down on the **PULL** tab on the bottom of the case to slide off the cover.
- 2) Carefully insert the SATA drive. The connector is keyed to fit in one direction only.
- 3) Align the cover with the case and inset it until it clicks closed.

Note: Attach the adhesive foam pad in the middle of the lower cover to secure a thin 7mm drive



3.2 Connecting the Enclosure to the Computer

- 1) Connect the provided USB cable to your computer and the USB-C 3.1 port on the Enclosure.
- 2) Wait until the Enclosure is recognized by the computer and check to see if the STATUS LED is lit.
- 3) Initialize and format the SSD drive for your operating system (see pages 5-7).



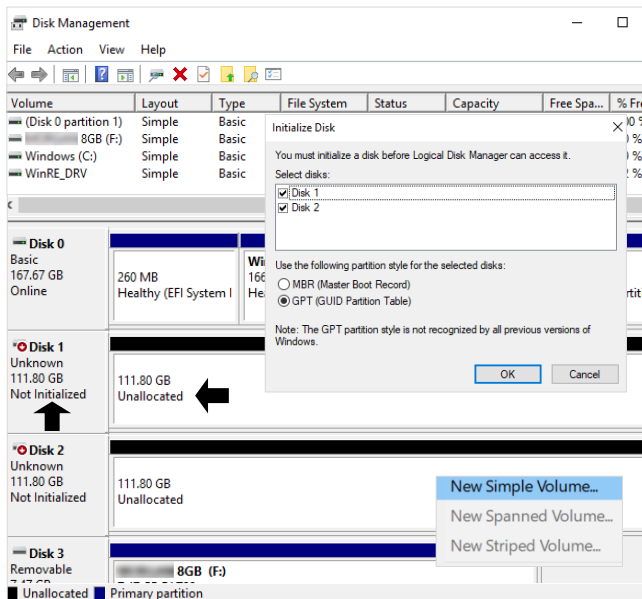
Important Notes:

- Do not block the air vents or place anything on top of the Enclosure to prevent overheating
- Always *Safely Remove* or *Eject* the Enclosure before disconnecting the cable

4. DRIVE FORMATTING FOR WINDOWS & MAC

4.1 Initializing & Formatting the SSD Drive in Windows 10

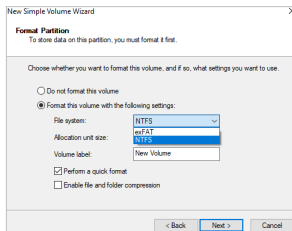
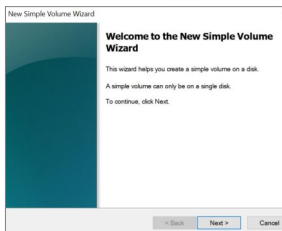
- 1) Turn on the power and connect the USB-C cable. Check that the blue LEDs are lit.
- 2) Search for **Create and format hard disk partitions**
- 3) Open the **Disk Management** utility
- 4) Click **OK** in the **Initialize Disk** menu to initialize the SSD (Right-click to open the menu, if needed)
- 5) Right-click on the **Unallocated** Disk to open and select the **New Simple Volume**
- 6) Follow the wizard instructions (see next page). Most drives can use the default settings.



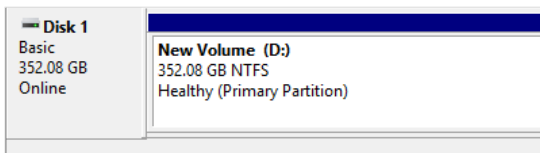
4.1 Initializing & Formatting the SSD Drive in Windows 10 (continued)

Use the **Simple Volume Wizard** to perform the following functions:

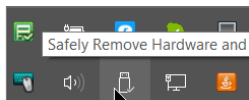
- * Partition a drive
- * Change the drive letter
- * Delete a partition
- * Format a drive
- * Shrink a partition
- * Change a drive file system type



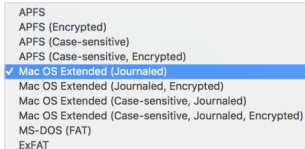
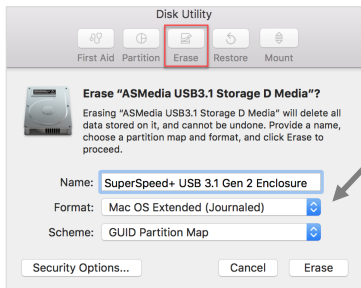
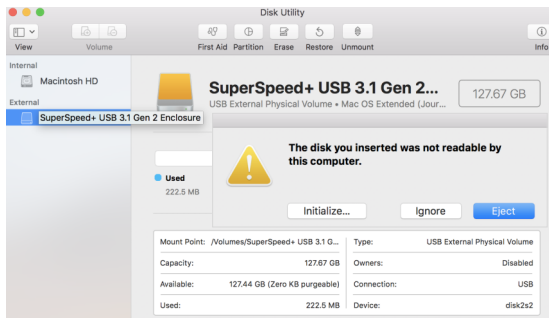
- Use the default menu choices when uncertain
- Select the **exFAT** file system to share the SSD enclosure with a Mac computer
- A notification window will list the successful operations. Click **Finish**.
- The disk/disks should now appear as **Healthy** in the **Disk Management** menu



- Open **File Explorer** to access the Enclosure and transfer files
- Use the **Safely Remove** icon from the taskbar or the notification area before removing the Enclosure to prevent damage to the drives



4.2 Initializing & Formatting the SSD Drive in macOS



- 1) Turn on the power and connect the USB-C cable
- 2) Check that the white power LED is lit
- 3) Select **Initialize**, when prompted (or open **Finder > Utilities > Disk Utility**)
- 4) Click **Erase** and provide a **Name**, **File Format**, and partition **Scheme**
(Select exFAT file format to share with a Windows computer)
- 5) Click the **Eject** button on the menu before removing the drives



5. Troubleshooting Notes

- Check that the STATUS LED is lit
- Connect directly to a USB port (not through a hub or dock) as a test.
- Hot-swapping the SSD is not supported and may corrupt the data.
- Check with the SSD manufacturer for management and diagnostic software.
- UASP, TRIM and S.M.A.R.T. support requires compatible equipment, drive and OS.
- Disconnect the Enclosure, reboot the computer and reconnect the Enclosure.
- Verify that your computer supports data transfer over USB-A or USB-C.
- Test with a different USB cable. Replacement cables must support 10Gbps data transfer for the maximum performance.
- Test with a different USB-A or USB-C port on the computer.
- Test with a different SATA drive. Drive must be initialized and formatted.

Windows OS:

- Check to see if your computer recognizes the Enclosure: Device Manager > Storage controllers > USB Attached SCSI (UAS) Mass Storage Device

macOS:

- Check to see if your computer recognizes the Enclosure: About this Mac > System Report > USB Device Tree > USB 3.1 Bus > 235C

Contact support@cablematters.com if you believe that the Enclosure is defective.

6. TECHNICAL SPECIFICATIONS

SSD Support:	SATA I (1.5 Gbps), II (3 Gbps), III (6 Gbps) 2.5-Inch SATA SSD or HDD up to 9.5mm
Drive Connector:	SATA Data & Power Combo (7+15 pin) Receptacle
External Host Interface:	USB 3.1 Type-C 10Gbps Female
OS Computer Host Support:	Windows, macOS, Linux
Compliance Certifications:	C E, FCC, RoHS
Included Cables:	USB-C 3.1 10Gbps data cable USB-A to USB-C 3.1 10Gbps data cable
LED Indicator:	White Power Indicator
Enclosure Housing (LxWxH)	5.1 x 3.1 x 0.6 Inches
Enclosure Weight	3.4 Ounces
Warranty:	Limited One-Year

Note: Specifications are subject to change without notice

7. WARRANTY & SUPPORT INFORMATION

7.1 Customer Support and Contact Information

Cable Matters offers lifetime technical support as an integral part of our commitment to provide industry leading solutions. Email us with any questions at support@cablematters.com.

7.2 Warranty Information

This product is backed by a limited one-year warranty. The warranty covers parts and labor costs only. Cable Matters does not warrant its products from defects or damages arising from misuse, abuse, or normal wear.

7.3 Limitation of Liability

In no event shall Cable Matters Inc. (including their officers, directors, employees or agents) be liable for any damages (whether direct or indirect, special, punitive, incidental, consequential, or otherwise), loss of profits, loss of data, loss of business, or any pecuniary loss, arising out of, or related to the use of this product exceeding the actual price paid for the product (as allowed by state law).

View other SATA SSD products at www.cablematters.com

USB-C™ 3.1 10Gbps Dual-Bay External
SATA SSD Enclosure

Model 201080



USB-C™ 10Gbps Cable with 100W PD

Model 201025



USB-C™ Multiport Data Hub with SATA

Model 201063